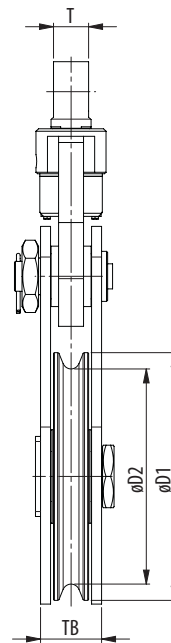
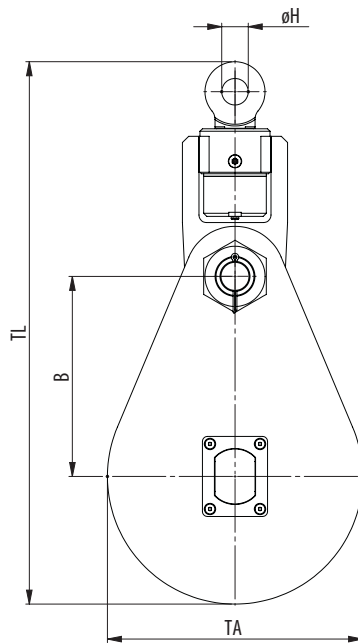
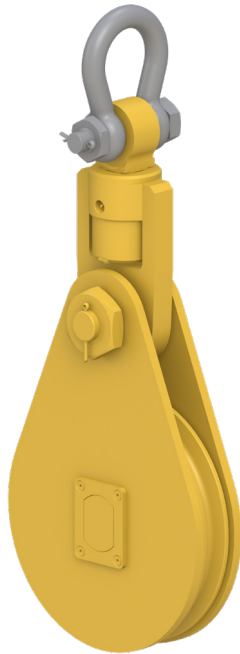


SNATCH BLOCKS



- Hook
- Clevis
- Tailboard
- Oblong eye

Model Nr.	WLL (Mtons)	For wire ød (mm)	Dimensions (mm)								Weight (kg)
			øD1	øD2	B	øH	T	TA	TB	TL	
VB 355.22.1.14.S	14	22	410	355	330	37	48	420	92	891	87
VB 240.28.1.20.S	20	28	300	240	255	37	48	310	84	735	52
VB 300.32.1.20.S	20	32	365	300	288	37	48	375	84	798	62
VB 240.28.1.25.S	25	28	300	240	255	40	54	310	84	727	52
VB 300.32.1.25.S	25	32	365	300	288	40	54	375	84	793	62
VB 390.26.1.25.S	25	26	450	390	350	53	70	470	112	1003	120
VB 240.28.1.27.S	27	28	300	240	255	44	57	310	84	814	67
VB 300.32.1.27.S	27	32	365	300	288	44	57	375	84	879	76
VB 345.32.1.32.S	32	32	400	345	325	53	70	410	112	949	114
VB 345.36.1.32.S	32	36	400	345	325	53	70	410	112	949	114
VB 390.32.1.32.S	32	32	450	390	350	53	70	470	112	1004	134
VB 390.38.1.32.S	32	38	450	390	350	53	70	470	112	1004	134
VB 430.32.1.32.S	32	32	495	430	375	53	70	510	112	1049	146
VB 430.38.1.32.S	32	38	495	430	375	53	70	510	112	1049	146
VB 520.32.1.32.S	32	32	595	520	435	53	70	610	112	1158,5	300
VB 430.32.1.36,5.S	36,5	32	495	430	400	53	70	510	122	1084	187
VB 430.38.1.36,5.S	36,5	38	495	430	400	53	70	510	122	1084	187
VB 240.28.1.55.S	55	28	300	240	290	59	78	310	142	960	174
VB 520.38.1.55.S	55	38	595	520	460	59	78	610	142	1280	300



Minimum Ultimate Strength = 4 x WLL

WLL= Working Load Limit on head fitting.

- The dimensions in this table are indicative only. A drawing will always be submitted prior to production and will be the leading document when discussing dimensions.
- Blocks shown here are standard models; inquiries for custom versions are welcome.
- Refer to wire rope manufacturers D/d ratio guideline.



SEE OUR WARNING & SAFETY INFORMATION